



MN Community Measurement Webinar: PIPE Overview

OCTOBER 28, 2020



Welcome!



Thanks for joining us today.



All webinar participants are in “listen-only” mode. To ask a question, please type your question into the “Q&A” box at the bottom of your screen at any time during the webinar.



MNCM will send a link to presentation slides and the recording to webinar attendees later this week.



Today's topic: Introduction to MNMCM's PIPE Data Collection System



PIPE is MNMCM's modernized approach to collecting data, calculating measures, and producing performance rates. We'll talk about:

- What are the rationale and goals for PIPE? What are the benefits?
- How does it work? How is it different from current data collection methods?
- What is the timeline for PIPE implementation?
- High-level overview of implementation process and how medical groups can prepare

MNCM Presenters/Staff



Julie Sonier
President and CEO



Will Muenchow
Director, Technology and
Security



Sandy Larsen
Manager, Data Collection
and Integrity



Ellen Kormanik
Data Quality Specialist



What problems does PIPE solve?



Outcome measures deliver high value, but can be time and resource intensive to report

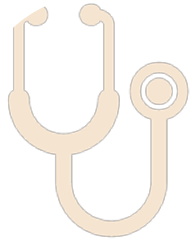


Current methods of data collection are a barrier to more timely data submission & feedback



Data are more important than ever to inform strategies, achieve goals, and earn financial incentives. Data must be timely to be useful.

PIPE Goals



Streamline clinical data collection/ reduce burden of data reporting



Reduce duplication of effort to understand and apply measure specifications



Reduce time and resources needed for data validation and auditing



Increase availability of timely and actionable information for providers and health plans



What is PIPE?

Process Intelligence Performance Engine (PIPE)



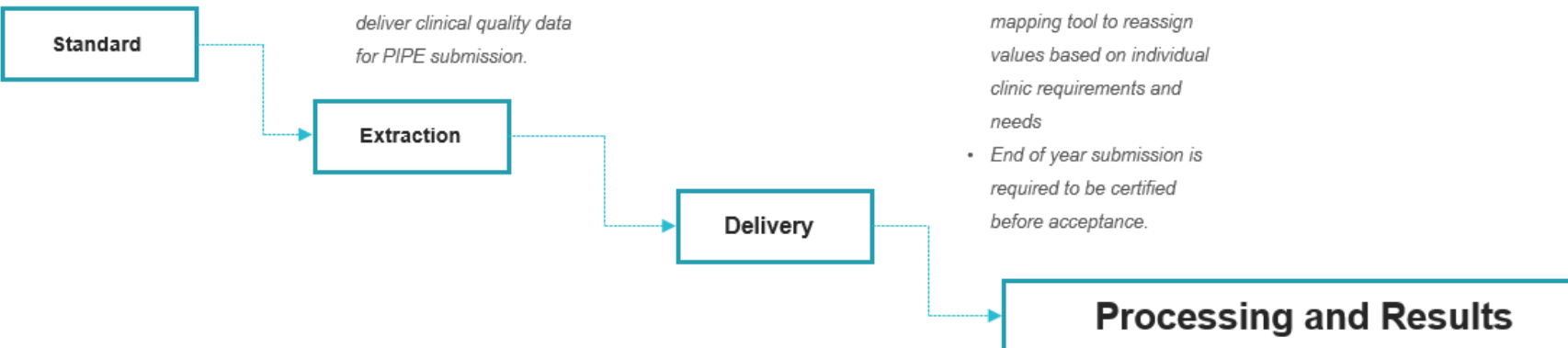
- PIPE utilizes one specification guide for all measures.
- Organizations that want to be a PIPE Pilot are required to implement this standard for clinical quality submission.

- Organizations can utilize their existing extraction methodologies and technology to submit the PIPE Data Standard.
- Clinics can opt to use the MNCM Softbot technology to implement intelligent automation to retrieve and deliver clinical quality data for PIPE submission.

- Clinical quality data is submitted to MNCM via a secure file transfer protocol (SFTP) server.
- Organizations can submit data for measure calculation as often as they need or required.

- The MNCM Performance Engine (PE) is able analyze data in real-time to calculate both the clinic's denominator and numerator for all measures based on the PIPE Specification Guide.
- PE includes a cross mapping tool to reassign values based on individual clinic requirements and needs
- End of year submission is required to be certified before acceptance.

- Clinical quality data can be submitted for calculation as often as a clinic needs or requires.



PIPE – Development and Testing

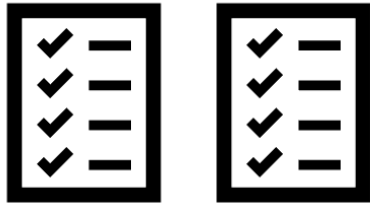
Developing a Model of Success Through Innovation and Collaboration



- How was the Performance Engine built?
- What measures are available in PIPE?
- Are DDS and PIPE measure results comparable?
- How did you test Process Intelligence?
- Is there a cost for PI?
- Are you still testing PIPE?

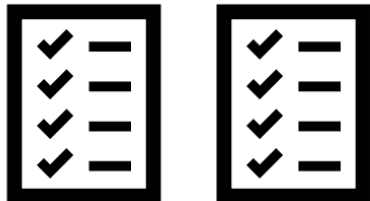
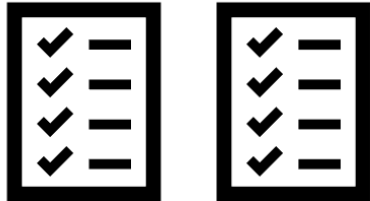


How does PIPE differ from the current DDS method?



DDS Method:

- Multiple specifications
- Eligible populations for each measure identified by the submitter
- Feedback annually only
- High burden



PIPE Method:

- One specification
- Eligible populations for all measures identified centrally by the PE
- Feedback monthly, quarterly, annually
- Low burden



PIPE Data Standard

- Enables calculation of all measures from single set of data files
- Medical groups understand and apply 1 specification vs. multiple under prior method
- Data extraction is simplified to make more frequent submission feasible
- URL: <http://www.mncm.org/pipestandard/>



[DATA COLLECTION TECHNICAL GUIDE](#)

Process Intelligence Performance Engine (PIPE) Data File Field Specifications



PIPE Data Standard



Contents

Demographic File	1
Encounter/CPT File	6
Problem List File.....	10
Blood Pressure File.....	11
Medication File	12
Allergy File	13
Lab/Procedure File.....	15
PRO Assessment File	17
Exclusions File	23
Appendix A: Facility Codes.....	24
Table 1: Hospital Facility Codes.....	24
Table 2: Freestanding Outpatient Surgical Centers.....	26

MN Community Measurement's (MNCM) Process Intelligence Performance Engine (PIPE) is designed to quickly analyze data received from a medical group to calculate the denominator, numerator, and rate summaries for MNCM's entire suite of measures using one set of data files. The PIPE Data File Field Specifications document contains the requirements for these data files.



PIPE Data File Field Specifications

PILOT Final v1.1

Demographic File

Contains one row per patient that had an encounter during the specified time period.

Element Order	Field Name	Details	Required or Situational	Format/Field Length	Error Causes
1	Patient ID	<ul style="list-style-type: none"> Unique patient identifier. Identifier must be used consistently across all data files and all submissions. DO NOT use SSN. If identifiers must change between submissions, contact MNCM at support@mncm.org. 	R	String; up to 50 characters	Blank fields
2	Patient Date of Birth (DOB)		R	mm/dd/yyyy or m/d/yyyy	Blank fields
3	Patient Sex	F = Female M = Male U = Unknown/Undefined	R	Text; 1 character	Blank fields Values outside allowable range
4	Patient Date of Death (DOD)		S	mm/dd/yyyy or m/d/yyyy	
5	Patient Status	0 = Deceased 1 = Alive	S	Number; 1 digit	
6	Race1	Enter the code that corresponds to the patient reported race. For patients who report more than one race, enter one code per field for each reported race, up to five. Do not submit the same code in multiple fields. 1 = American Indian or Alaska Native 2 = Asian 3 = Black or African American 5 = Native Hawaiian/Other Pacific Islander	S	Number; up to 2 digits	Values outside allowable range
7	Race2		S	Number; up to 2 digits	
8	Race3		S	Number; up to 2 digits	
9	Race4		S	Number; up to 2 digits	
			S	Number; up to 2 digits	

© MN Community Measurement, 2019. All rights reserved.

CONFIDENTIAL

1




Performance Engine – Clinical Quality Measurement

What is the Performance Engine?



- Secure portal for clinical quality measurement
- Clinics can upload data and run calculations as often as needed
- System supports custom measure periods and data cross mapping
- Both measure and data validation occur during import and results are available to the clinic
- Submission results are available in the portal

Performance Engine (PE)



Email address

Password

Sign In

[\(forgot password\)](#)



TEST Medical Group

Will Muenchow ▾

Dashboard

Medical Group Tools

Uploaded Files

Resources

Dashboard

Welcome, Will! You are logged into TEST Medical Group. The PE Portal will allow you to quickly analyze clinical data and provide real-time denominator and numerator reporting. For more information on how to get started, please click [here](#).

Registration Progress

Fully Registered for 2019 ✔

Recent Measure Activities

Process Description	Process Type	Status	Last Update
Rate Summary	AMH Calculation	Finished	10/06/2020 14:45
MeasureNumerator	AMH Calculation	Finished	10/06/2020 14:45
MeasureDenominator	AMH Calculation	Finished	10/06/2020 14:45

©2020, MN Community Measurement [612-746-7522](tel:612-746-7522) | support@mncm.org | [MNCM Knowledge Base](#) | [MNCM Academy](#)



Performance Engine (PE) – Medical Group Tools

The screenshot displays the MN Community Measurement Performance Engine (PE) interface for the 'TEST Medical Group'. The user is logged in as 'Will Muenchow'. The interface features a left-hand navigation menu with the following items: Dashboard, Medical Group Tools (highlighted), Uploaded Files, and Resources. The main content area is titled 'Medical Group Tools' and contains three primary sections, each with a help icon (question mark in a circle):

- Medical Group Management**: Includes links for Medical Group, Clinics, Providers, and Contacts.
- Measure Setup**: Includes links for Measure Management, Periods, and Value Sets.
- Calculation and Result Management**: Includes links for Measure Calculations and Measure Results.

At the bottom of the interface, there is a footer with the following information: ©2020, MN Community Measurement; 612-746-7522 | support@mncm.org | MNCM Knowledge Base | MNCM Academy.



Performance Engine (PE) – Process Cycle

Clinical Quality Reporting

Clinics that elect to use the PE for measure submission will have their final denominator and numerator calculation completed by the engine and will be able to submit results to MNCM

PIPE Data Standard

Clinic either uploads PIPE Data Standard manually or utilizes PI to extract standard. Data will be securely placed in a SFTP for importing.

Ad-Hoc Reporting

Clinics can run reports within the PE as often as they refresh data or update custom measure periods

Data Validation

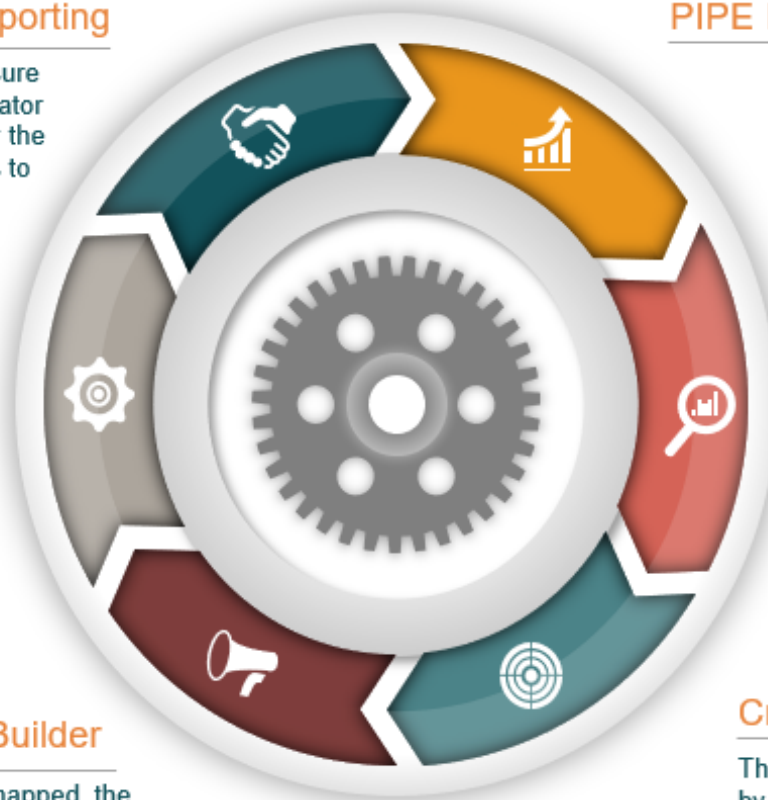
As data is received by the PE, data goes through an automated validation to ensure all required fields for measure calculation have been received properly

Denominator and Numerator Builder

Once clinic data has been successfully mapped, the Denominator and Numerator Builder allows organizations to review how their data was calculated for measure results

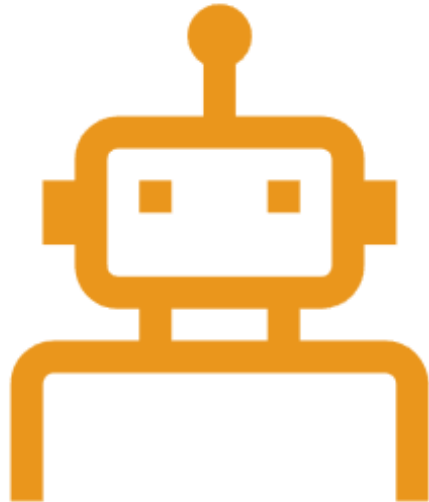
Cross Mapping Tool

The Cross Mapping Tool is used by clinics and MNCM to ensure that any custom data mapping that needs to be cross walked can be completed quickly by both parties for proper measure calculation



What is a Softbot?

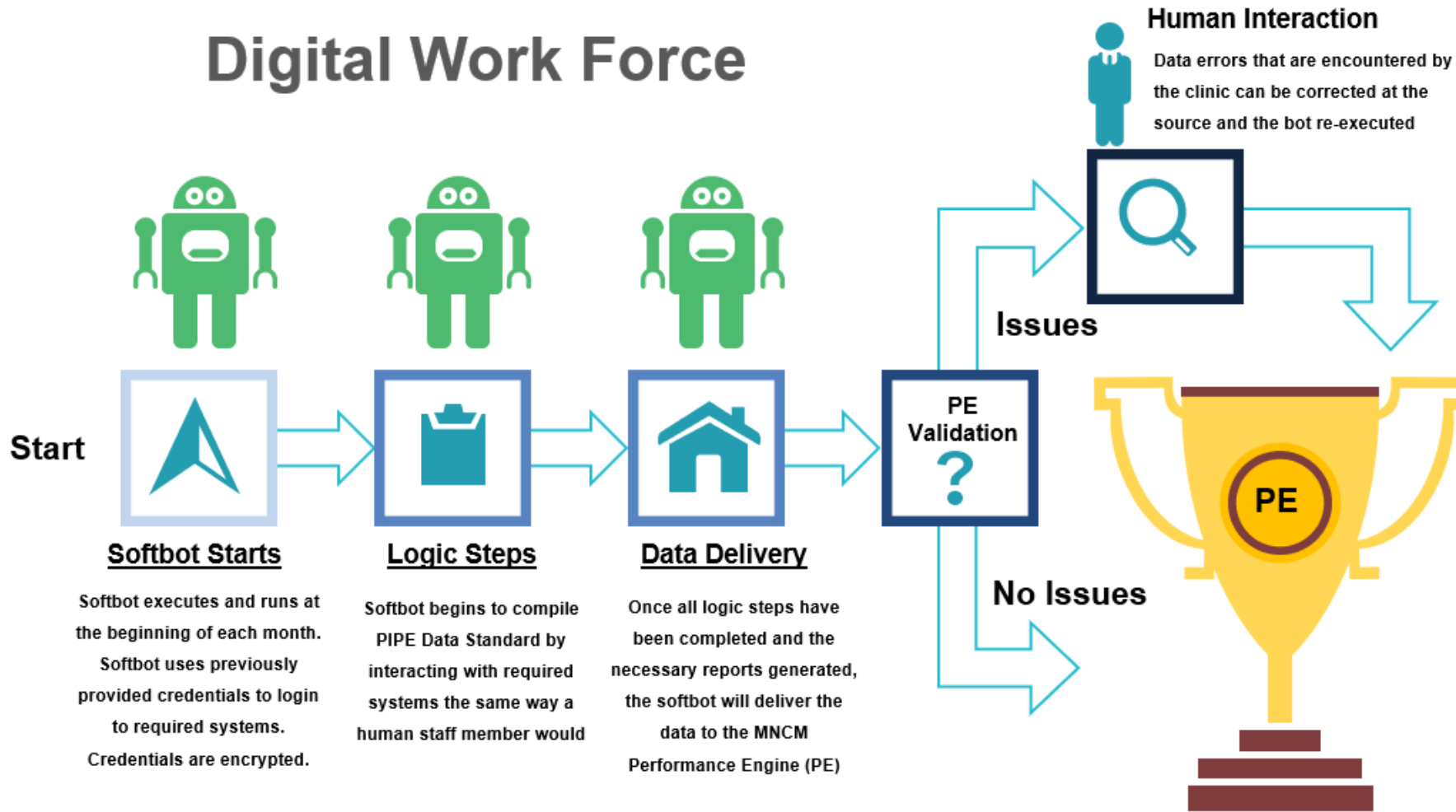
Optional Tech to Support Extraction: Process Intelligence (PI)



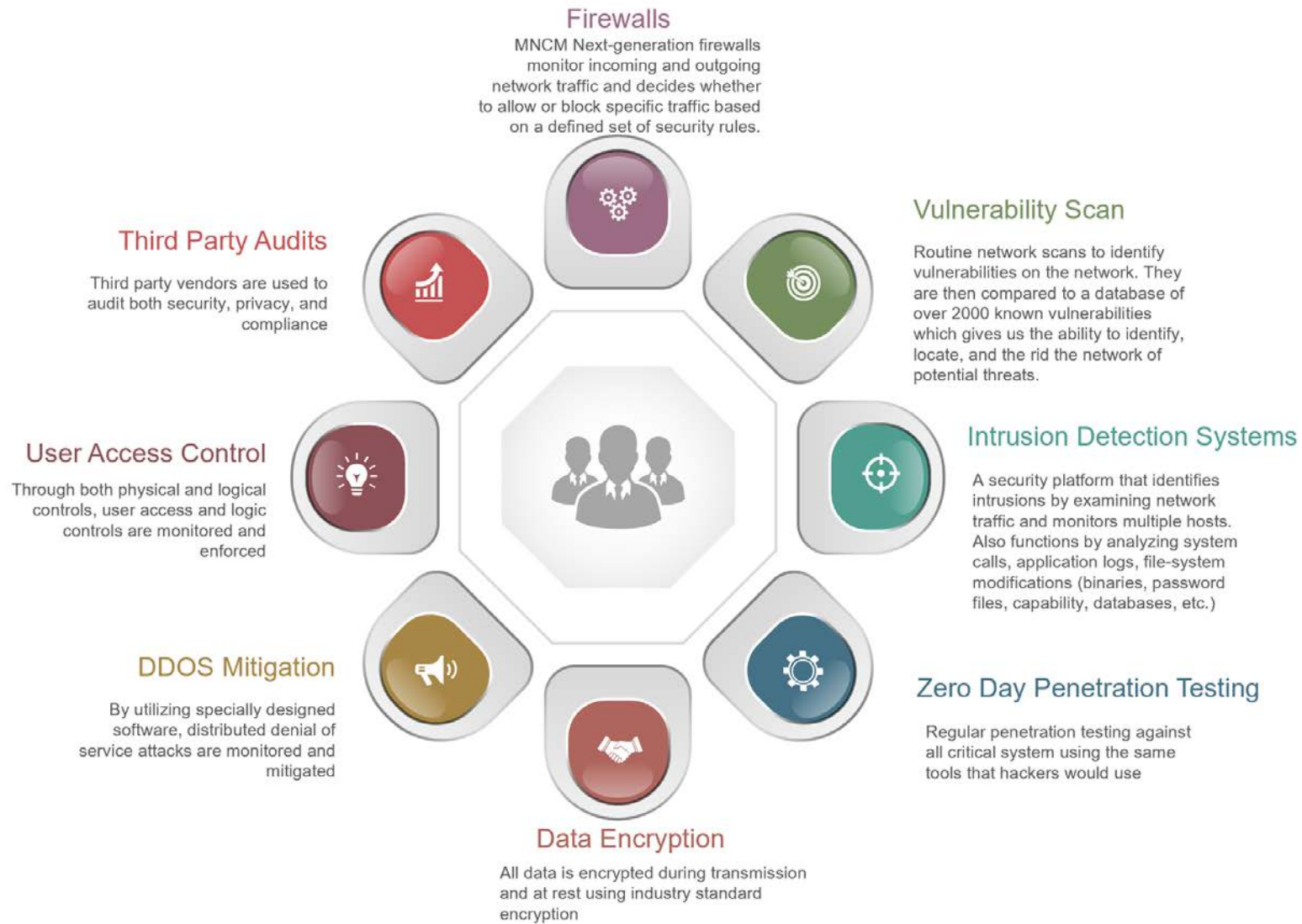
- Softbot is NOT a physical robot
- Softbot is a configurable software
- Sits on top of a company's existing IT infrastructure
- Pulls data, performs algorithms, creates reports
- Mimics tasks a human would complete
- All about intelligent automation

Process Intelligence – Process Flow

Digital Work Force



MNCM – Security Program



PIPE Software – Enhancement Schedule

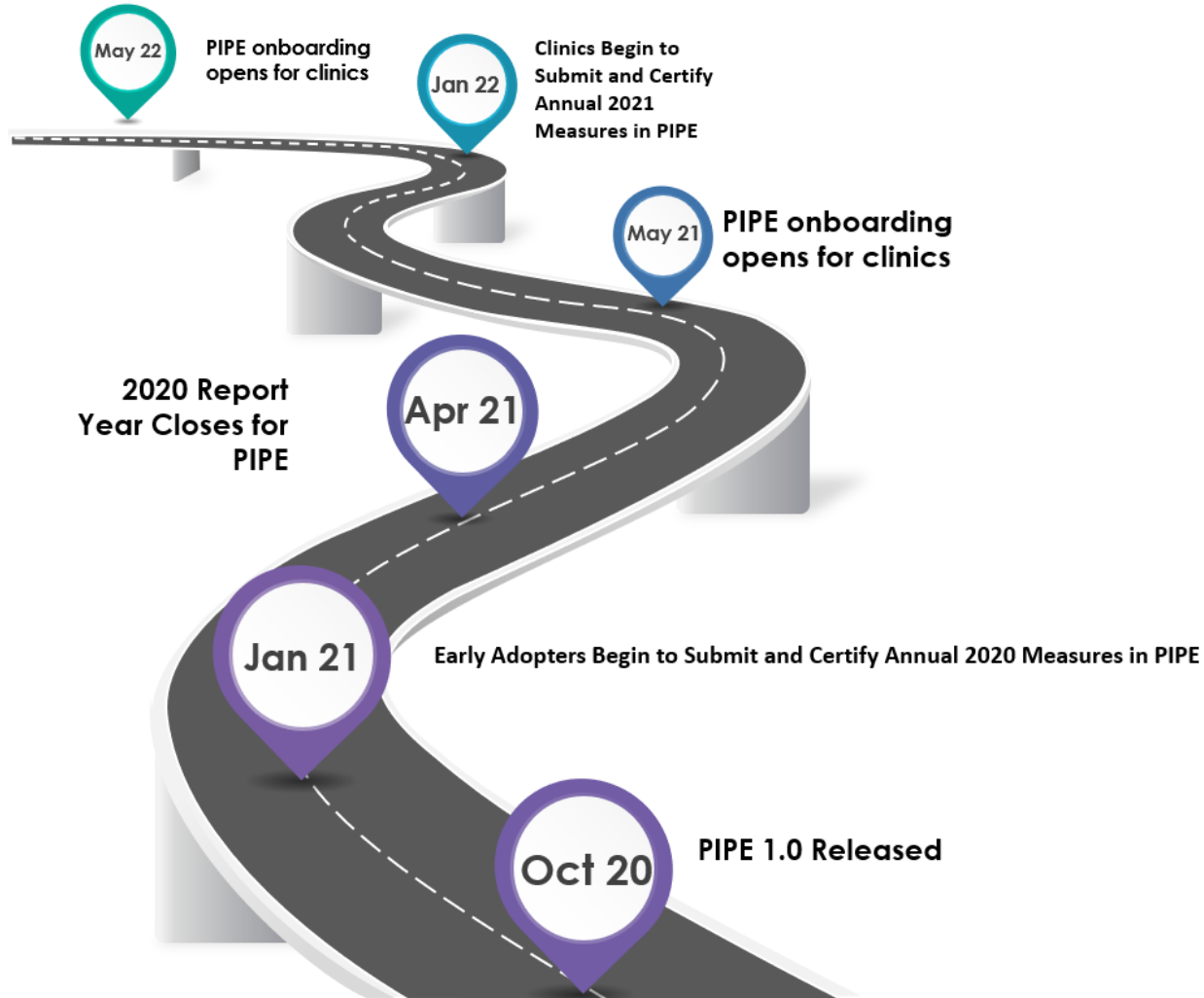
What new enhancements are coming to PIPE?



- October 2020 – PIPE Software 1.0 Released
- January 2021 – PIPE 1.1
 - Import & Validation Enhancement
- May 2021 – 1.2
 - Data Export Enhancement for Authorized Users



PIPE Roadmap



How Should a Clinic Prepare to Transition PIPE?

Clinics that are interested in onboarding to PIPE should contact MNCM at support@mncm.org and attend the detailed PIPE Webinar on November 18, and 10 AM.

Even if you are submitting under DDS in 2021, the November PIPE Webinar will give you the knowledge, detail, and understanding on how best to position your clinic to make the transition to PIPE.



Building on our strong foundation: new MNCM initiatives



Streamline data collection and reduce burden of measurement



Provide more timely information to support improvement efforts



Get everyone on the same page about how data are shared between providers and payers, to pave the way for success in value-based payment



Q&A/Discussion

Please type your questions into the “Q&A” box at the bottom of your screen



Thank you!



To learn more about PIPE:

- Attend the **November 18** webinar "Preparing to Onboard to PIPE: A Detailed Look at the Process and Requirements"
- Email support@mncm.org with additional questions



Other upcoming events:

- **November 12**, Health Care Cost and Utilization Report webinar
- **January 13**, CHIRP webinar
- **February 18**, MNCM Annual Conference (virtual event)

