



MNCM Medical Group Webinar

February 28, 2024








Thanks for joining us today!



All webinar participants are in “listen-only” mode. To ask a question, please type your question into the “Q&A” box at the bottom of your screen at any time during the webinar.



MNCM will send a link to the presentation slides and the recording to webinar attendees later this week.

-  PIPE onboarding
-  Opportunities for Medical Groups
-  Data Visualization Portal Demo
-  Membership & Conference
-  Q & A

MNCM Staff Presenting



Ellen
Kormanik
*Data Quality
Supervisor*



Will
Muenchow
*Vice President,
Technology and
Innovation*



Ma Xiong
*Director,
Data
Strategy &
Analytics*



Jess
Donovan
*Clinical
Measure
Analyst*



Maegi Yang
*CHIRP
Program
Manager*



Trisha
Brinkhaus
*Health Data
Manager*



Kathie
Pugaczewski
*Director,
Business
Transformation
& Growth*

PIPE Goals



Streamline clinical data
collection & reduce burden
of data reporting



Maximize time and
resources



Increase availability of
timely and actionable
information for providers
and health plans

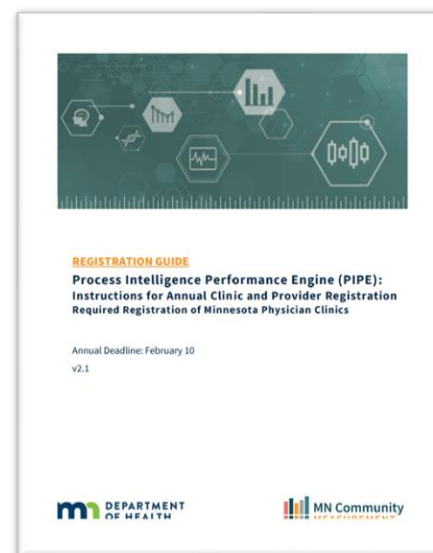


Increase confidence

2024 Registration

- All groups will register in PIPE
- Registration only groups will not need to submit patient level clinical quality data
- The PIPE provider data file includes additional columns that enable groups to submit new situational data elements
- Additional providers are registered in the same data file as SQRMS providers

Help Desk Resources



Registration Guide &
Provider Template

Completing Annual Registration

Completing Annual Registration

Annual registration will be completed in the Fall. This video will walk through what key steps need to be completed.

Duration - 4:11

Creation date: 7/24/2023 2:05 PM Updated: 7/24/2023 2:05 PM

Registration
tutorial video

<https://helpdesk.mncm.org/helpdesk/KB/View/32156444-pipe-registration-guide-and-provider-template>

2024 Onboarding plan

- To make the onboarding process efficient for medical groups that submit clinical quality data, MNCM is combining groups into cohorts to onboard together.
- Medical groups with similarities in the following categories will be combined:
 - EMR
 - Specialties
 - Report writers
 - Health Networks
- Query building and the onboarding workload will be distributed across groups in each cohort.
- Let us know if you want to be paired with specific group(s) when completing the readiness assessment



PIPE Onboarding Data Submitters

Prepare for onboarding



Sign legal agreement



Read specifications & other resources



Identify hurdles & roadblocks



Identify key staff & groups to onboard with



Complete readiness assessment

Help Desk Resources

- [PIPE Specifications](#)
- [Data File Extract Guidance](#)
- [Implementation Plan-Timeline](#)
- [Important PIPE Data Considerations](#)
- [Milestone 1- Pre-implementation tasks](#)

<https://helpdesk.mncm.org/helpdesk/KB>

Ensuring Data Security in PIPE Submissions

- **Secure Data Handling:** Data Encryption & Transmission: Utilizing SSL/TLS for secure data submission and encryption at rest to protect stored data.
- **Access Control & Authentication:** Implementing strict access controls and role-based access to ensure data is accessible only to authorized personnel.
- **Multi-Factor Authentication (MFA):** Requiring MFA for all users accessing the PIPE system. This adds an additional layer of security by requiring two or more verification factors, significantly reducing the risk of unauthorized access.
- **Public Key Infrastructure (PKI):** Leveraging PKI for secure digital certificates and key management. This allows for secure exchange of information over the internet, authenticating the identity of the entities involved in the data transfer.



Maintaining Privacy and Compliance in PIPE

- **HIPAA Compliance:** Regular assessments and staff training ensure adherence to privacy and security rules.
- **Privacy Training:** Continuous training programs for employees to emphasize the importance of protecting patient information.
- **Security Framework:** Implement SOC2 framework for MNMCM systems
- **Data Integrity Controls:** Use checksums and digital signatures to maintain data integrity and detect tampering.
- **Third-Party Vendor Management:** Rigorously assess and monitor third-party vendors for compliance with privacy and security standards.
- **Risk Management:** Implement a risk management framework to proactively identify, assess, and mitigate privacy and security risks.

What is new this year?

**Social Risk
Factors**

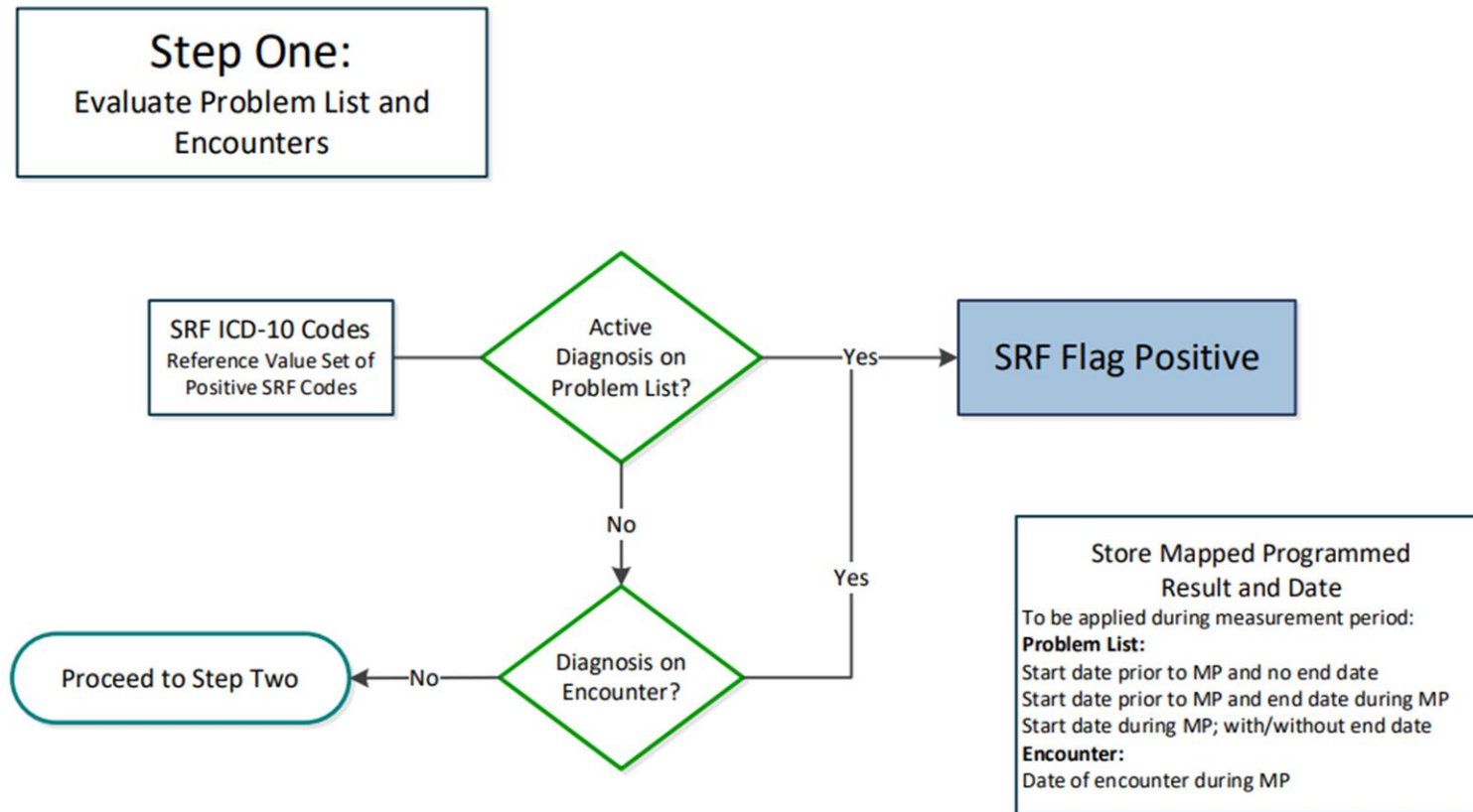
**Research
Opportunities**

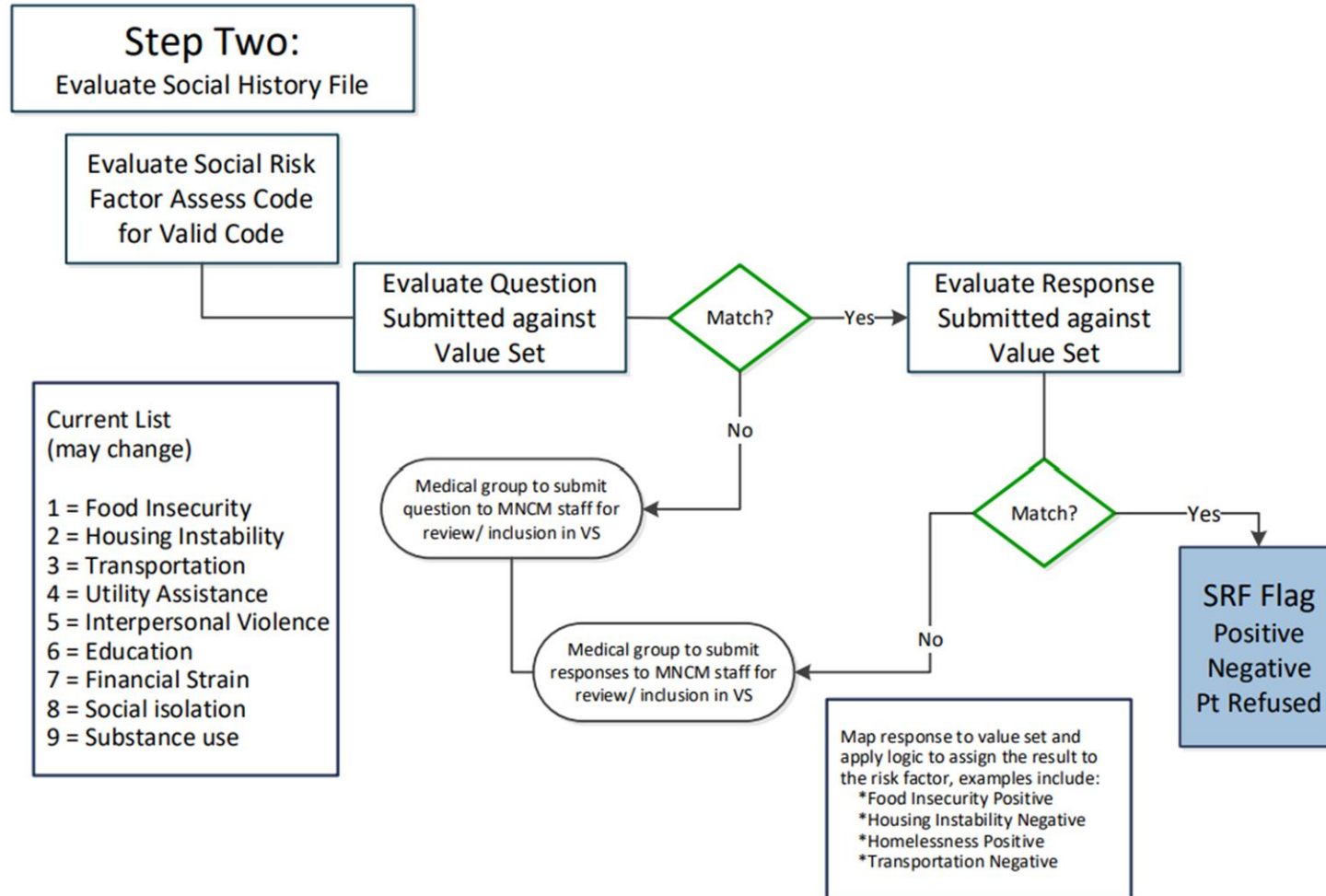
**Chronic
Kidney
Disease**

CHIRP

**Membership
Benefits**

PIPE Method Accepting Social Risk Factor Data v1





PIPE Portal Resources

<p>Dashboard</p> <hr/> <p>Uploaded Files</p> <hr/> <p>Medical Group Tools</p> <hr/> <p style="color: orange;">Medical Group Resources</p> <hr/>	<p style="color: orange;">MG Resources</p> <hr/> <p>Clinic and Provider Registration</p> <hr/> <p>Data Specifications</p> <hr/> <p>Data Submission</p> <hr/> <p>Final Statewide Results</p> <hr/> <p>HEDIS Measure Data</p> <hr/> <p>New User Requests</p> <hr/> <p>PIPE Submission Certification</p> <hr/> <p>Social Risk Factors and Fetal Alcohol Spectrum Disorder</p> <hr/>	<p style="color: orange;">Social Risk Factors and Fetal Alcohol Spectrum Disorder</p> <p>Please see below for resources related to Social Risk Factors (SRF) and Fetal Alcohol Spectrum Disorder (FASD).</p> <div style="border: 1px solid #2c5e6c; padding: 10px; margin-top: 10px;"> <p>Approved Social Risk Factor Value Set</p> <p>1. SRF- FASD Value Set New - February 15, 2024</p> <p>>>Please click the link below to download the value set SRF_Value_Set_Workbook_v5_Nov_2023-_for_groups.xlsx</p> </div> <div style="border: 1px solid #2c5e6c; padding: 10px; margin-top: 10px;"> <p>MNCM Social Risk Factor recommendations</p> <p>1. If you have a social risk factor topic, diagnosis, screening tool or question & answer that you want MNCM to consider adding to our approved value set, please complete the form below. New - February 15, 2024</p> <p>>>Please click on the link to access the form. The password is MNCMsrf https://fpofhzz9qv6.typeform.com/MNCMsrf</p> </div>
---	---	---

Portal Resources

- Library value set includes:
 - Diagnoses
 - Questions & Responses
- Typeform groups can use to submit recommend additional srf topics, diagnoses and question-responses

Help Desk Resources

Social Risk Factors & Fetal Alcohol Spectrum Disorder More...

MNCM is releasing a new data file in PIPE that allows groups to submit social risk factors starting in 2024. Specifications for the new data file are attached below. A recorded webinar and slide deck about the project are available below:

Social Risk Factors Data Collection // [Recorded 3/22/2023 Slides](#)

Collection and use of data on social risk factors to improve health outcomes and health equity is currently a high priority in Minnesota and nationally, and the landscape is evolving rapidly. In 2022, MN Community Measurement convened a Technical Advisory Group (TAG) to develop a roadmap for future collection of social risk factors data. The TAG's main goals were to find a way of collecting information on social risk factors that 1) accommodates providers' use of multiple approaches and tools, 2) avoids creating additional burden for providers, and 3) will be robust and adaptable as national approaches and expectations evolve. This webinar on March 22 will summarize the TAG's work and recommended roadmap for MNCM to begin collecting social risk factors data by 2025.

Creation date: 11/15/2023 10:30 AM Updated: 2/15/2024 11:53 AM



FASD Info.pdf



PIPE Method v1 6-6-...



Social History File 8-...

Help Desk Resources

- Social Risk Factor webinar & slide deck
- New Social History data file specifications
- Fetal Alcohol Spectrum Disorder (FASD) info sheet

What is new this year?

Social Risk
Factors

Research
Opportunities

Chronic
Kidney
Disease

CHIRP

Membership
Benefits

Opportunities for Medical Groups

Research Opportunities

- MNCARES
- MN Electronic Health Record Consortium (MNEHRC)

Participation in new opportunities will require an addendum to the legal agreement

Research Opportunities

MN Electronic Health Record Consortium

About MNEHRC

- A partnership of health care professionals, researchers, and leaders from Minnesota health systems and statewide health care.
- Assist state and local public health agencies with efforts to better understand the prevalence of specific health conditions by aggregating summary electronic health records data using a common data model.
- All Minnesota medical groups and health systems are invited to participate.

MNCM's Role

- Remove barriers by reducing the amount of effort for smaller health systems and medical groups to participate.
- Medical groups onboarded to PIPE or in the process of onboarding may sign an agreement authorizing MNCM to map their PIPE data to the common data model.
- Medical groups will provide specific written authorization to MNCM for each project they agree to participate in.
- Each participating health system's data stays within their own organization. Participating health care systems prepare summary reports for their patient population; individual-level data is not shared.

What is new this year?

Social Risk
Factors

Research
Opportunities

**Chronic
Kidney
Disease**

CHIRP

Membership
Benefits



What is it?

Data analysis tool created to support medical groups and clinics onboarded into PIPE system for tracking and assessing improvement efforts related to CKD prevention and treatment among patients with diabetes.



What's included?

Features several different analyses for nine metrics developed by an advisory group related to CKD prevention and treatment among patients with diabetes. Medical groups can also access patient-level gap reports, which will be available via MNCM's PIPE system.



Will this information be publicly reported?

No, this information will only be made available to participating medical groups and is intended to be used as a quality improvement tool.

Funding Disclosure

Funding to support this project has been provided by Bayer Healthcare Pharmaceuticals, Inc. To ensure program integrity, MNCM is following its Guidelines for Engagement of Commercial Interests.

For more information, contact Jess Donovan: Donovan@mncm.org

What is new this year?

Social Risk
Factors

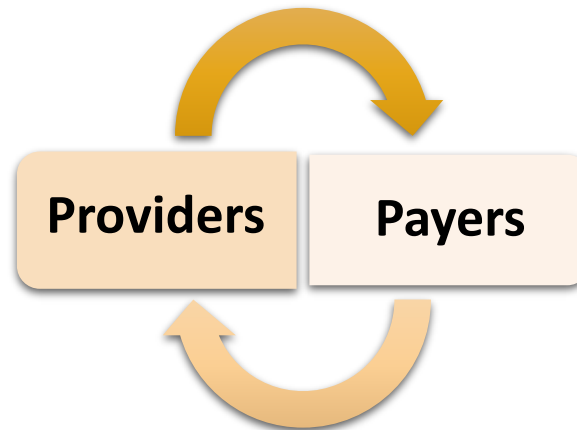
Research
Opportunities

Chronic
Kidney
Disease

CHIRP

Membership
Benefits

Common Health Information Reporting Partnership (CHIRP)



Drive health care improvement by facilitating standardized data sharing that is timely, actionable, consistent, and complete.

Benefits to Provider Participation



Increased efficiency/reduced burden due to transition of clinical data sharing responsibility to MNCM



Increased accuracy in gap reports received from health plans due to increase in health plan access to more timely clinical data

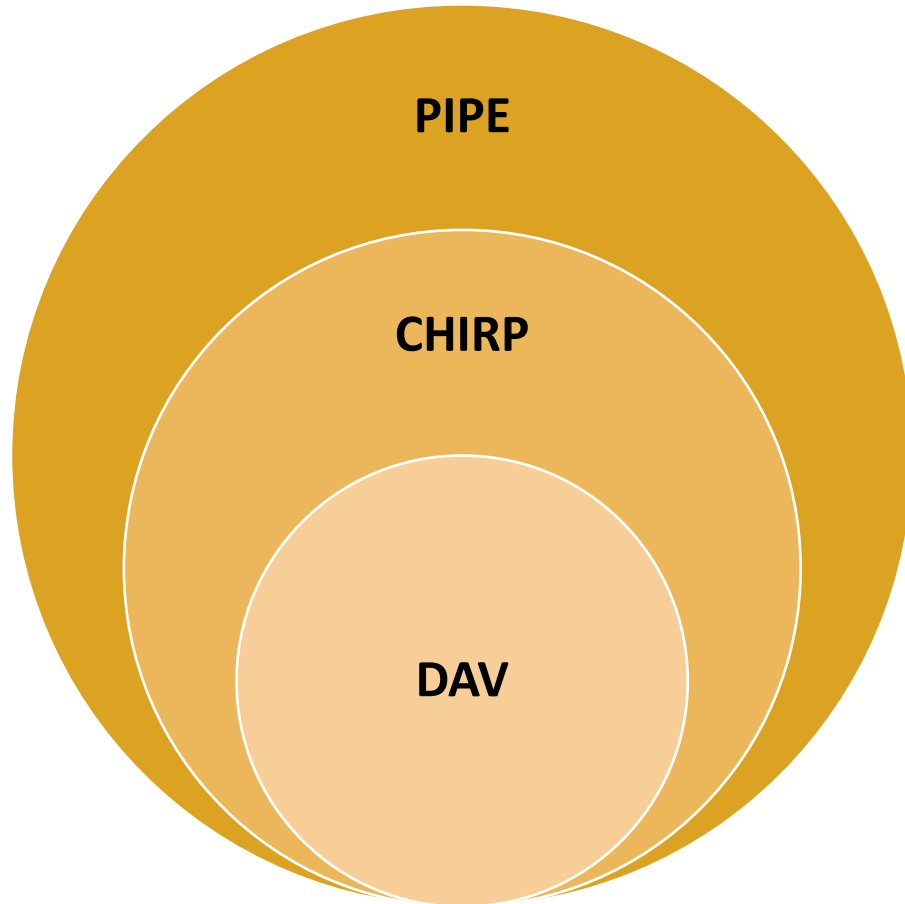


Efficiency and cost savings from fewer chart chases requested by health plans for HEDIS measures



No cost to Providers for Provider-to-Payer data sharing

Provider-to-Payer Data Flow



PIPE – All Providers and Payers onboarded to this system for MNCM’s core work

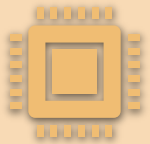
CHIRP – Facilitates data flows between Provider and Payers that are participating in the program

DAV – Data from sources (Providers) that have been validated through the NCQA Data Aggregator Validation program

Commitments to Participating in CHIRP



Monthly data submissions for Demographic, Encounter, Blood Pressure and Lab/Procedure files (by second Friday of every month)



Notify MNCM regarding all EHR and query changes that impact data prepared for submission to PIPE in a timely manner.



Annual NCQA Data Aggregator
Validation re-certification in the
summer

Requires: Reviewing and providing screen
shots for one case per medical group per year
while enrolled in the CHIRP program

What is new this year?

Social Risk
Factors

Research
Opportunities

Chronic
Kidney
Disease

CHIRP

**Membership
Benefits**

Dynamic Tables

- Medical group members receive access to the online dynamic tables that is supplementary to the standard files provided to data submitters.
- Performance information summarized for all medical groups and clinics, with comparisons to statewide and local rates for other entities.
- The tool is interactive, sortable, and can be filtered for your needs. Tabs in the file provide information on:
 - Quality measures
 - Total cost of care
 - Utilization
 - Procedure cost



MNCM has published 2020 quality measures for individual medical groups, however, due to the pandemic we urge caution in using this data or changes in rates for specific medical groups between 2019 and 2020 to draw general conclusions about quality of care. In many respects, 2020 should be considered a new baseline from which recovery should be measured.

Displaying **MNCM Measures - Health Care Quality Report**

Select Measure Year, Measure Name and Group Name to filter the report. *Click on the eraser in the filter box to clear selections.*

MN Community MEASUREMENT

2021 Measure Year

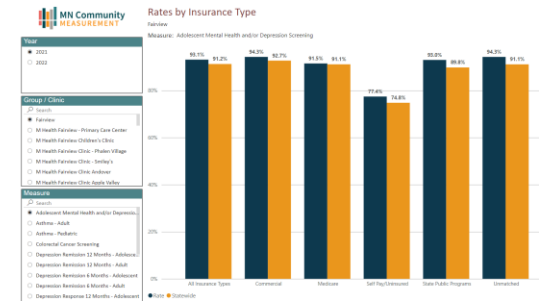
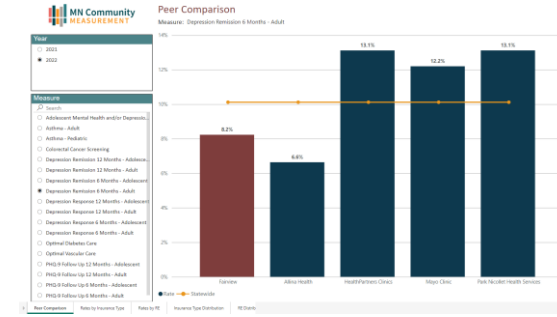
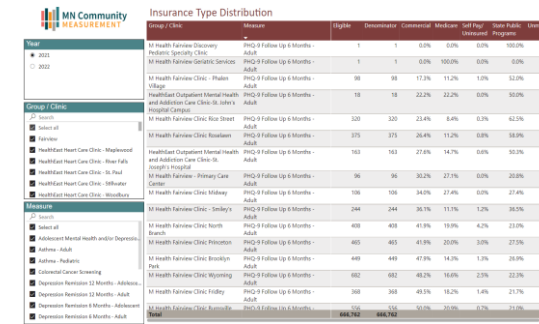
Optimal Asthma Control - Adults Measure

Clear Selections

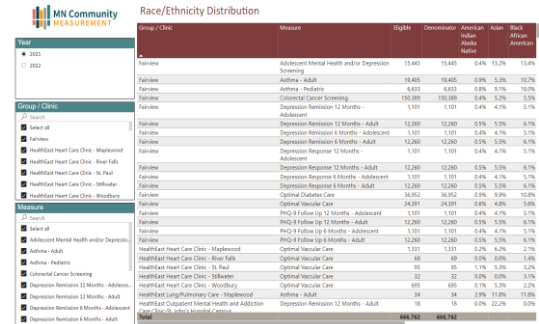
GROUP NAME	CLINIC NAME	Year	Measure	PATIENTS	HEALTHSCORE	ACTUAL RATE	EXPECTED RATE
1. STATEWIDE AVERAGE (ALL MEDICAL GROUPS)		2021	Optimal Asthma Control - Adults	148,176		50.3%	
Allina Health		2021	Optimal Asthma Control - Adults	25,810	Above Expected	59.4%	52.0%
Allina Health	Allina Health - Abbott Northwestern General Medicine Associates - Edina	2021	Optimal Asthma Control - Adults	278	Above Expected	65.5%	55.3%
Allina Health	Allina Health - Annandale	2021	Optimal Asthma Control - Adults	190	Expected	54.2%	51.9%
Allina Health	Allina Health - Apple Valley	2021	Optimal Asthma Control - Adults	500	Expected	56.4%	53.4%
Allina Health	Allina Health - Bandana Square	2021	Optimal Asthma Control - Adults	1,090	Expected	49.8%	47.9%
Allina Health	Allina Health - Blaine	2021	Optimal Asthma Control - Adults	471	Above Expected	64.8%	53.9%
Allina Health	Allina Health - Bloomington	2021	Optimal Asthma Control - Adults	334	Above Expected	59.3%	49.6%

Member Benchmarking Tool

- Medical group members also receive access to the online Member Mental Benchmarking Tool that is supplementary to the standard files provided to data submitters.
- Performance information is summarized for your medical group and its clinics, with comparisons to statewide and other like entities.
- The tool is interactive and can be filtered for your needs. Tabs in the file provide information on quality measures:
 - Compared to the peer organizations you selected
 - Segmented by insurance type
 - Segmented by race and ethnicity
 - Distribution tables by insurance and race and ethnicity

Group / Clinic	PHQ-9 Follow Up 6 Months - Adult	Count	Denominator	Commercial	Medicare	Self Pay	State Medicaid	Uninsured
M Health Farview Primary Care	PHQ-9 Follow Up 6 Months - Adult	1	1	0.0%	0.0%	0.0%	100.0%	0.0%
M Health Farview Geriatric Services	PHQ-9 Follow Up 6 Months - Adult	1	1	0.0%	100.0%	0.0%	0.0%	0.0%
M Health Farview Clinic - Phalen Village	PHQ-9 Follow Up 6 Months - Adult	98	98	17.2%	11.2%	1.0%	52.0%	18.4%
HealthEast Outpatient Mental Health and Addiction Care Clinic St. Mary's Hospital Campus	PHQ-9 Follow Up 6 Months - Adult	18	18	22.2%	22.2%	0.0%	50.0%	5.0%
M Health Farview Clinic Rice Street	PHQ-9 Follow Up 6 Months - Adult	320	320	23.4%	8.4%	0.3%	63.5%	5.4%
M Health Farview Clinic Broadway	PHQ-9 Follow Up 6 Months - Adult	375	375	26.4%	11.2%	0.3%	58.9%	2.1%
HealthEast Outpatient Mental Health and Addiction Care Clinic St. Mary's Hospital	PHQ-9 Follow Up 6 Months - Adult	163	163	27.6%	14.7%	0.0%	50.3%	6.4%
M Health Farview Clinic - North Branch	PHQ-9 Follow Up 6 Months - Adult	96	96	30.2%	27.1%	0.0%	20.0%	21.7%
M Health Farview Clinic - Primary Care	PHQ-9 Follow Up 6 Months - Adult	106	106	34.0%	27.4%	0.0%	27.4%	11.1%
M Health Farview Clinic - Midway	PHQ-9 Follow Up 6 Months - Adult	244	244	36.1%	11.1%	1.2%	38.0%	15.5%
M Health Farview Clinic - North Branch	PHQ-9 Follow Up 6 Months - Adult	408	408	41.9%	19.9%	4.2%	23.0%	11.0%
M Health Farview Clinic - Princeton Park	PHQ-9 Follow Up 6 Months - Adult	405	405	41.9%	20.0%	3.0%	27.5%	7.7%
M Health Farview Clinic - Broadway Park	PHQ-9 Follow Up 6 Months - Adult	449	449	47.8%	14.3%	1.3%	28.9%	8.7%
M Health Farview Clinic - Wyoming	PHQ-9 Follow Up 6 Months - Adult	682	682	48.2%	16.6%	2.3%	22.3%	10.6%
M Health Farview Clinic - Holiday	PHQ-9 Follow Up 6 Months - Adult	368	368	49.5%	18.2%	1.4%	21.7%	9.1%
M Health Farview Clinic - Summit	PHQ-9 Follow Up 6 Months - Adult	506	506	53.0%	20.0%	0.3%	22.0%	14.7%
Total		6467	6467					



Group / Clinic	Measure	White	Dem/Hispanic	American Indian/Alaska Native	Asian	Black African American
Statewide	Adolescent Mental Health and/or Depression Screening	15,840	15,840	0.4%	0.4%	13.4%
Farview	Adolescent Mental Health and/or Depression Screening	18,405	18,405	0.3%	0.3%	10.7%
Farview	Adolescent Mental Health and/or Depression Screening	8,021	8,021	0.8%	0.7%	10.0%
Farview	Adolescent Mental Health and/or Depression Screening	156,180	156,180	0.4%	0.3%	5.3%
Farview	Adolescent Mental Health and/or Depression Screening	1,101	1,101	0.4%	0.4%	5.1%
Farview	Depression Response 12 Months - Adult	12,260	12,260	0.3%	0.3%	6.1%
Farview	Depression Response 12 Months - Adolescent	1,101	1,101	0.4%	0.4%	5.1%
Farview	Depression Response 6 Months - Adult	12,260	12,260	0.3%	0.3%	6.1%
Farview	Depression Response 12 Months - Adolescent	1,101	1,101	0.4%	0.4%	5.1%
Farview	Optimal Vaccines Care	24,991	24,991	0.4%	0.4%	5.6%
Farview	PHQ-9 Follow Up 12 Months - Adolescent	1,101	1,101	0.4%	0.4%	5.1%
Farview	PHQ-9 Follow Up 6 Months - Adolescent	1,101	1,101	0.4%	0.4%	5.1%
Farview	PHQ-9 Follow Up 6 Months - Adult	12,260	12,260	0.3%	0.3%	6.1%
Farview	Optimal Vaccines Care	1,101	1,101	0.2%	0.2%	2.3%
HealthEast Heart Care Clinic - Maplewood	PHQ-9 Follow Up 6 Months - Adult	12,260	12,260	0.3%	0.3%	6.1%
HealthEast Heart Care Clinic - Rose Falls	Optimal Vaccines Care	80	80	0.0%	0.0%	1.4%
HealthEast Heart Care Clinic - St. Paul	Optimal Vaccines Care	80	80	1.1%	1.2%	3.2%
HealthEast Heart Care Clinic - Stillwater	Optimal Vaccines Care	32	32	0.0%	0.0%	3.1%
HealthEast Heart Care Clinic - Woodbury	Optimal Vaccines Care	80	80	0.1%	0.1%	2.2%
HealthEast Outpatient Mental Health and ADDICTION	Adolescent Mental Health and/or Depression Screening	18	18	0.0%	0.0%	0.0%
Total		6467	6467			

Clinician Level Reporting

Clinician Level Reporting to be added to Member Benchmarking area of the Data Visualization Portal

- Initial iteration of reporting will be results for MNCM's clinical quality measures reported by medical groups calculated at a clinician level
- MNCM compiling feedback and designing technical specifications through Quarter 1
 - MNCM is still seeking feedback on topics such as patient attribution methods and alternative data visualizations to inform initial development and future enhancements.
- Technical specifications will be reported back to members before the end of Quarter 1 with the intent to begin development in Quarter 2
- Launch in Benchmarking Tool planned for Quarter 3



*Please type your questions into the
“Q&A” box at the bottom of your screen*

Thank You Supporting Members

Allina Health
Andros ENT & Sleep Center
CentraCare Health
Entira Family Clinics
Essentia Health
Fairview Health Services
HealthPartners Medical Group

Hennepin Healthcare
MN Rural Health Cooperative
North Memorial
Ortonville Area Health Services
Peacetree Family Institute
Premier ObGyn of Minnesota
Welia Health

Supporting Member Benefits

Data Visualization Portal

- Member Benchmarking Tool
- Dynamic Tables
- Clinician Level Reporting – coming in 2024

Annual Conference Member rates

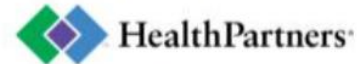
Recognition on website, email, social media

Member Levels & Join

MNCM Annual Conference

Wednesday, September 25, 2024 | 8:00 a.m. – 4:00 p.m.
Minneapolis Marriott Northwest, Brooklyn Park, MN

Gold Sponsor



Silver Sponsors



Bronze Sponsor



mncm.org/conference2024

Next steps



MNCM will send a link to presentation slides and the recording to webinar attendees later this week.



Please reach out to us at support@mncm.org with additional questions related to available data or how our data can support your work.



Join our mailing list for newsletters and other updates:
<https://mncm.org/news/#newsletters>



Thank You!