

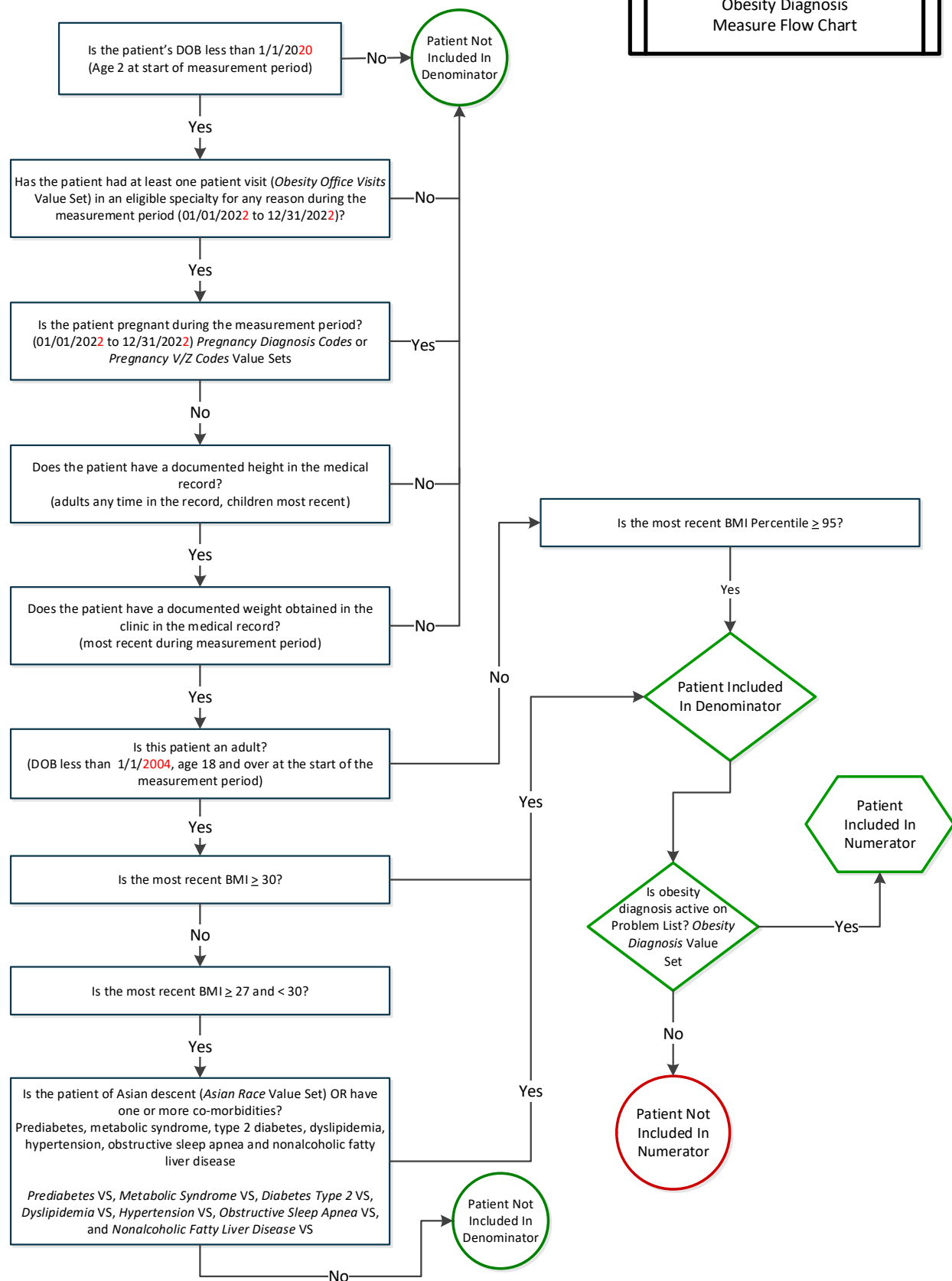
## Obesity Diagnosis

|                                |  |  |
|--------------------------------|--|--|
| <b>Measure</b>                 | Obesity Diagnosis  |  |
| <b>Description</b>             | The percentage of adult patients 18 years of age and older whose most recent BMI is $\geq$ to 30 <b>or</b> $\geq$ 27 with comorbidities* or Asian descent and children ages 2 to 17 whose most recent BMI percentile $\geq$ 95 during the measurement period and have the diagnosis of obesity active on their problem list. |  |
| <b>Measurement Period</b>      | January 1 through December 31, 202x  |  |
| <b>Eligible Population</b>     | <b>Eligible Specialties</b>  | Family Medicine, Internal Medicine, Pediatrics, Gastroenterology, and Endocrinology  |
|                                | <b>Ages</b>  | 2 years or older at the start of the measurement period  |
|                                | <b>Event</b>   | Office visit during the measurement period ( <i>Obesity Office Visits VS</i> ) and with office recorded height and weight <u>and</u> with most recent BMI/BMI percentile defined as obese [adult $\geq$ 30 or $\geq$ 27 with comorbidity* or of Asian descent or children with BMI percentile $\geq$ 95] |
| <b>Denominator</b>             | The eligible population  |  |
| <b>Numerator</b>               | The number of patients in the denominator who have the diagnosis of obesity active on the patient's problem list. ( <i>Obesity Diagnosis VS</i> )  |  |
| <b>Exclusions</b>              | Pregnancy during the measurement period. ( <i>Pregnancy V/Z Codes VS, Pregnancy Diagnosis Codes VS, Diabetes with Pregnancy VS</i> )   |  |
| <b>Measure Scoring</b>         | Rate/Proportion  |  |
| <b>Interpretation of Score</b> | Higher score indicates better quality  |  |
| <b>Measure Type</b>            | Process  |  |
| <b>Comorbidities*</b>          | Prediabetes, metabolic syndrome, type 2 diabetes, dyslipidemia, hypertension, obstructive sleep apnea and nonalcoholic fatty liver disease. ( <i>Prediabetes VS, Metabolic Syndrome VS, Diabetes Type 2 VS, Dyslipidemia VS, Hypertension VS, Obstructive Sleep Apnea VS, Nonalcoholic Fatty Liver Disease VS</i> )          |  |

### Key Data Elements Needed to Calculate Measure:

- Birthdate for age calculation
- Height and weight for adult BMI calculation; recorded in office (not patient report)
- Height, weight, and gender for pediatric BMI percentile calculation; recorded in office (not patient report)
- CPT office visit codes
- Race (OMB categories)
- ICD-10 diagnosis codes (from problem list) for numerator and comorbidities
- ICD-10 diagnosis codes (encounter) for pregnancy exclusion

## Measure Algorithm



## Value Sets for Measure

### Office Visits (Denominator)

- OB-1 *Obesity Office Visits*

### Obesity Diagnosis (Numerator)

- OB-2 *Obesity Diagnosis*

### Pregnancy (Exclusion)

- DM-02 *Diabetes with Pregnancy*
- PREG-01 *Pregnancy V/Z- Codes*
- PREG-02 *Pregnancy Diagnosis Codes*

### Comorbidities (BMI $\geq$ 27)

- OB-05 *Prediabetes*
- OB-12 *Metabolic Syndrome*
- DM-01 subset *Diabetes Type 2*
- OB-06 *Dyslipidemia*
- OB-07 *Hypertension*
- OB-08 *Obstructive Sleep Apnea*
- OB-09 *Nonalcoholic Fatty Liver Disease*
- OB-10 *Asian Race*

### Diagnosis of Obesity Value Set (Numerator) OB-2 Obesity Diagnosis Value Set

| ICD-10 Code | ICD-10 Diagnosis Code Description                     |
|-------------|---|
| E66.01      | Morbid (severe) obesity due to excess calories        |
| E66.09      | Other obesity due to excess calories                  |
| E66.1       | Drug-induced obesity                                  |
| E66.2       | Morbid (severe) obesity with alveolar hypoventilation |
| E66.8       | Other obesity   |
| E66.9       | Obesity, unspecified                                  |
| Z68.27      | Body mass index [BMI] 27.0-27.9, adult                |
| Z68.28      | Body mass index [BMI] 28.0-28.9, adult                |
| Z68.29      | Body mass index [BMI] 29.0-29.9, adult                |
| Z68.30      | Body mass index [BMI]30.0-30.9, adult                 |
| Z68.31      | Body mass index [BMI] 31.0-31.9, adult                |
| Z68.32      | Body mass index [BMI] 32.0-32.9, adult                |
| Z68.33      | Body mass index [BMI] 33.0-33.9, adult                |
| Z68.34      | Body mass index [BMI] 34.0-34.9, adult                |
| Z68.35      | Body mass index [BMI] 35.0-35.9, adult                |
| Z68.36      | Body mass index [BMI] 36.0-36.9, adult                |

| ICD-10 Code | ICD-10 Diagnosis Code Description   |
|-------------|---|
| Z68.37      | Body mass index [BMI] 37.0-37.9, adult  |
| Z68.38      | Body mass index [BMI] 38.0-38.9, adult  |
| Z68.39      | Body mass index [BMI] 39.0-39.9, adult  |
| Z68.41      | Body mass index (BMI) 40.0-44.9, adult  |
| Z68.42      | Body mass index (BMI) 45.0-49.9, adult  |
| Z68.43      | Body mass index (BMI) 50-59.9, adult  |
| Z68.44      | Body mass index (BMI) 60.0-69.9, adult  |
| Z68.45      | Body mass index (BMI) 70 or greater, adult  |
| Z68.54      | Body mass index [BMI] pediatric, greater than or equal to 95th percentile for age |